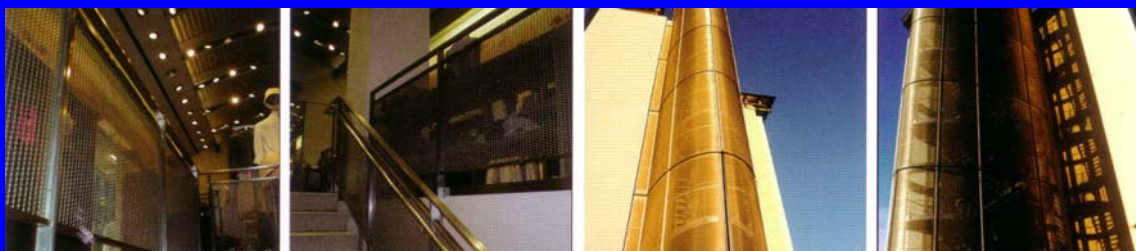


Architectural Sheets & woven wire  
Αρχιτεκτονικές ανοξείδωτα φύλλα

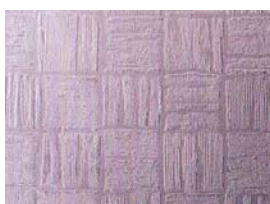


## INOX HELLAS

### DECO SHEETS



Art. No.	S mm	W mm	L mm	Kgr./ pcs	Aisi 304
DEC002-15-10	0,80	1000	2000	12,800	*
DEC002-15-12	0,80	1250	2500	20,000	*



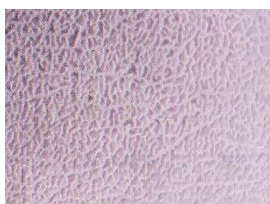
Art. No.	S mm	W mm	L mm	Kgr./ pcs	Aisi 304
DEC03-11-10	0,80	1000	2000	12,800	*
DEC03-11-12	0,80	1250	2500	20,000	*



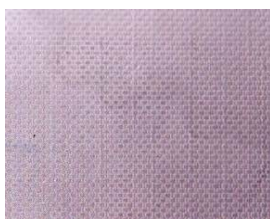
Art. No.	S mm	W mm	L mm	Kgr./ pcs	Aisi 304
DEC016-16-10	0,80	1000	2000	12,800	*
DEC016-16-12	0,80	1250	2500	20,000	*



Art. No.	S mm	W mm	L mm	Kgr./ pcs	Aisi 304
DEC017-3-10	0,80	1000	2000	12,800	*
DEC017-3-12	0,80	1250	2500	20,000	*



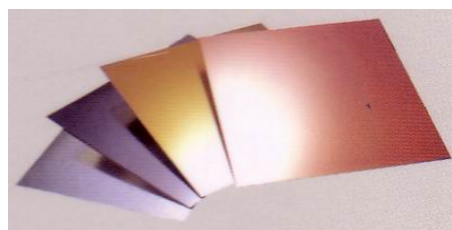
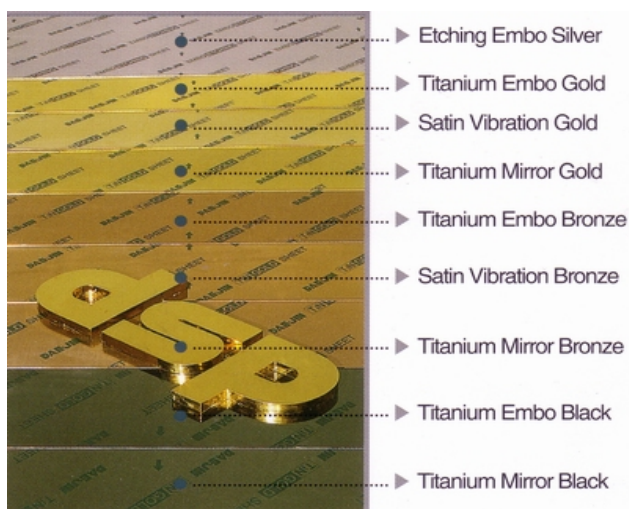
Art. No.	S mm	W mm	L mm	Kgr./ pcs	Aisi 304
DEC008-8-10	0,80	1000	2000	12,800	*
DEC008-8-12	0,80	1250	2500	20,000	*



Art. No.	S mm	W mm	L mm	Kgr./ pcs	Aisi 304
DEC009-9-10	0,80	1000	2000	12,800	*
DEC009-9-12	0,80	1250	2500	20,000	*

**Sheets, Stainless Steel Arc-Ion Titanium plating by DSP**  
**Λαμαρίνες, ανοξείδωτες - τιτανίου DSP**

## Titanium Arc-Ion Plating **Innovation of Stainless Steel** DSP Architectural Design



**Colors:**

Gold, bronze, Black, Silver

**Finishes:**

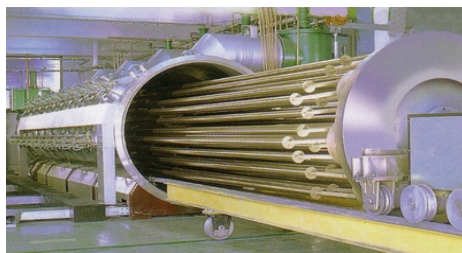
Mirror, Etching, Embo, Hairline, Vibration.

**thickness:**

from 0,8 mm up to 3 mm

**Quality st. steel.:**

Aisi 304, 316, 316 L



Titanium Arc-Ion Technology

**Χρώματα:**

Χρυσό, Μπρονζέ, Μαύρο, Ασημί

**Φινίρισμα:**

Καθρέπτης, Σατινέ, Etching, Embo.

**Πάχος;**

Από 0,8 mm έως 3 mm

**Ποιότητα:**

Aisi 304, 316, 316 L

Ex stock, minimum quantity required.

Κατόπιν παραγγελίας . Ελάχιστη ποσότητα αναλ. με διάσταση.

INOX HELLAS

## ADRRIATIC

Material:	Aisi 316L
Open Area:	64%
Thickness of Mesh:	8mm
Weight:	7,2kg/mq
Maximum Mesh Width:	2000mm
Standard Panel Sizes:	3000x2000mm

### Aplication:

Ballustrade - Facades - Ceilings - Tower



## CASCADE

Material:	Aisi 316L
Open Area:	56%
Thickness of Mesh:	6,5mm
Weight:	7,4kg/mq
Maximum Mesh Width:	2000mm
Standard Panel Sizes:	3000x2000mm

### Aplication:

Facades - Staircase Screen - Interior Panels - Radiator Panels





INOX HELLAS

# AMAZON

Material:	Aisi 316L
Open Area:	66%
Thickness of Mesh:	8mm
Weight:	9,3kg/mq
Maximum Mesh Width:	2000mm
Standard Panel Sizes:	3000x2000mm

## Aplication:

Stairs - Coverings - Ceilings - Interior Panels



# MEDWAY

Material:	Aisi 316L
Open Area:	65%
Thickness of Mesh:	10mm
Weight:	10kg/mq
Maximum Mesh Width:	2000mm
Standard Panel Sizes:	3000x2000mm

## Aplication:

Balustrade - Coverings - Totem - Facades



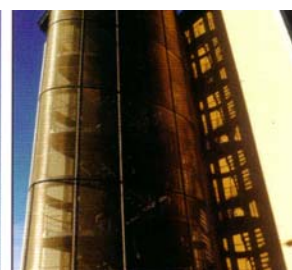
INOX HELLAS

## CONISTON

Material:	Aisi 316L
Open Area:	58%
Thickness of Mesh:	5,5mm
Weight:	8kg/mq
Maximum Mesh Width:	2000mm
Standard Panel Sizes:	3000x2000mm

### Aplication:

Balustrade - Ceilings - Show Rooms - Tower



## FORTE 1

Material:	Aisi 304L/316L
Open Area:	45,5%
Thickness of Mesh:	2,1mm
Weight:	4,1kg/mq
Maximum Mesh Width:	2000mm
Standard Panel Sizes:	3000x2000mm

### Aplication:

Seatings - Accessories - Ceilings - Balustrade





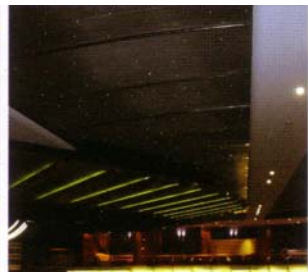
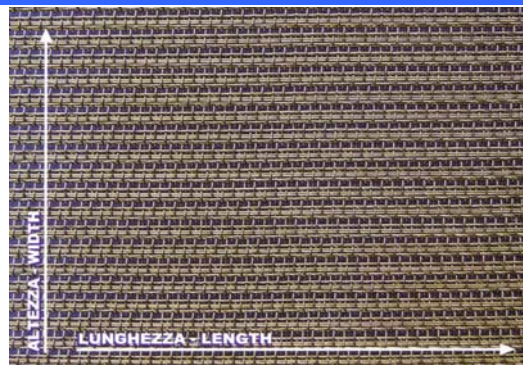
INOX HELLAS

## RAPPORTO 12

Material:	Aisi 304L/316L
Open Area:	33,3%
Thickness of Mesh:	1,7mm
Weight:	3kg/mq
Maximum Mesh Width:	2000mm
Standard Panel Sizes:	3000x2000mm

### Aplication:

Ceilings - Interior Panels - Shops - Interior Panels  
Shops - Accessories



## TESSUTI BRONZO

Material:	BRONZE
Open Area:	45,6%
Thickness of Mesh:	0,1mm
Weight:	0,3kg/mq
Maximum Mesh Width:	1300mm
Standard Panel Sizes:	1000x2000mm

### Aplication:

Tents - Decorations - Shops - Flymesh



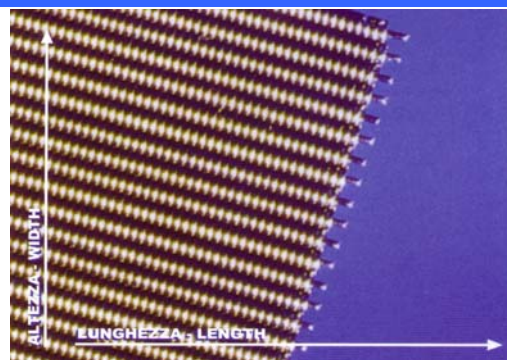
INOX HELLAS

## SPECIAL REPS

Material:	Aisi 304L/316L
Open Area:	-
Thickness of Mesh:	0,7mm
Weight:	3kg/mq
Maximum Mesh Width:	2000mm
Standard Panel Sizes:	3000x2000mm

### Aplication:

Tents - Decorations - Interior Panels - Paving

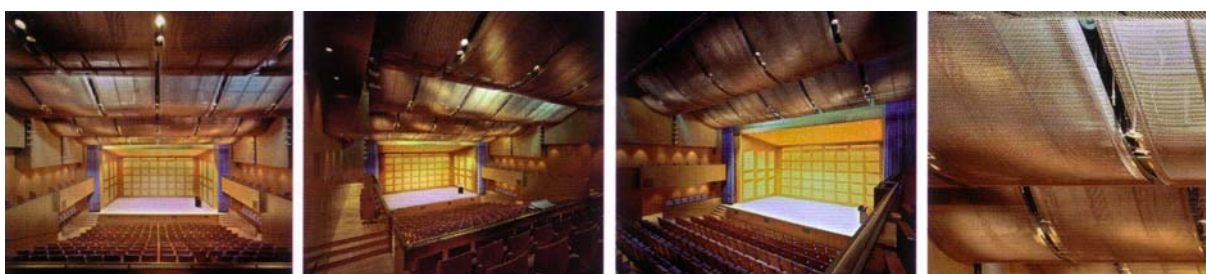


## ONDA 19

Material:	Aisi 304L/316L
Open Area:	68% Aprox.
Thickness of Mesh:	5mm
Weight:	7,3kg/mq
Maximum Mesh Width:	2500mm
Standard Panel Sizes:	3000x2000mm

### Aplication:

Ceilings - Coverings - Facades - Balustrade





INOX HELLAS

## CASSIA

Material:	Aisi 304L/ALL
Open Area:	55%
Thickness of Mesh:	0,3mm
Weight:	1,2kg/mq
Maximum Mesh Width:	1000mm
Standard Panel Sizes:	1000x2000mm

### Aplication:

Interior Panels - Accessories - Shops



## GINEPRO

Material:	Aisi 304L/ALL/ACZ
Open Area:	57%
Thickness of Mesh:	0,8mm
Weight:	2,7kg/mq
Maximum Mesh Width:	1250mm
Standard Panel Sizes:	1000x2000mm

### Aplication:

Interior Panels - Accessories - Shops - Facades



INOX HELLAS

## MIRTO

Material:	Aisi 304L/ALL/AAC
Open Area:	65%
Thickness of Mesh:	1,5mm
Weight:	4kg/mq
Maximum Mesh Width:	1250mm
Standard Panel Sizes:	1000x2000mm

### Aplication:

Seatings - Interior Panels - Accessories - Shops

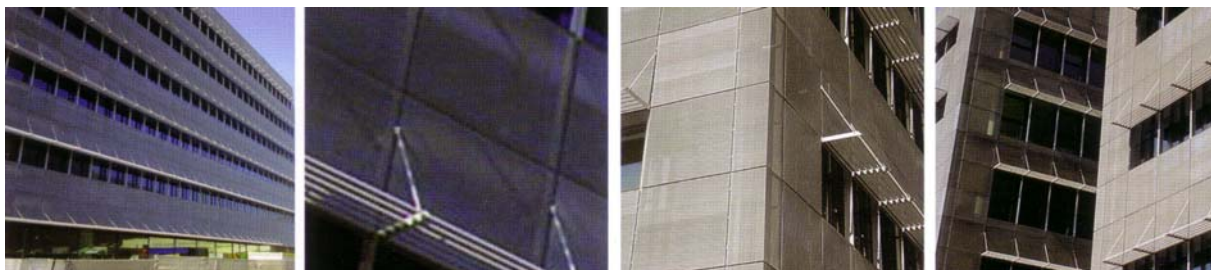


## SCHINUS

Material:	Aisi 304L/ALL/ACC
Open Area:	57%
Thickness of Mesh:	2mm
Weight:	7,2kg/mq
Maximum Mesh Width:	1250mm
Standard Panel Sizes:	1000x2000mm

### Aplication:

Gangways - Interior Panels - Facades  
Balustrade





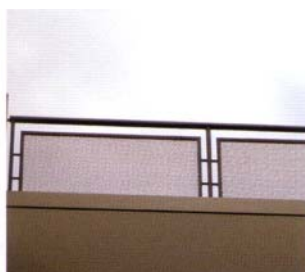
INOX HELLAS

## PISTACHIO

Material:	Aisi 304L/ALL/AAC
Open Area:	61%
Thickness of Mesh:	1,5mm
Weight:	4,5kg/mq
Maximum Mesh Width:	1250mm
Standard Panel Sizes:	1000x2000mm

### Aplication:

Interior Panels - Accessories - Shops  
Balustrade

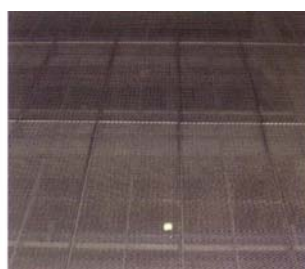
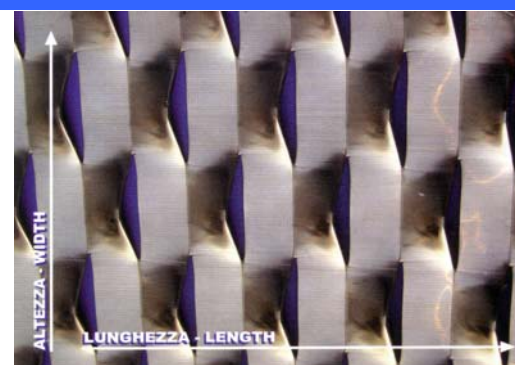


## MACIS

Material:	ALL/AAC
Open Area:	-
Thickness of Mesh:	1,5mm
Weight:	11kg/mq
Maximum Mesh Width:	1000mm
Standard Panel Sizes:	1000x2000mm

### Aplication:

Gangways - Interior Panels - Facades





**INOX HELLAS**

76 Ag. Dimitriou str. 18545 Piraeus Greece

te. +30 210 4620368 / 78 fax. +30 210 4620386 email: [info@inoxhellas.gr](mailto:info@inoxhellas.gr)

**INOX HELLAS overseas**

Aaramoun main road, Yehya-Yehya bld. Beirut, Lebanon

te. +961 (05) 804 802

[www.aspisergon.com](http://www.aspisergon.com)